

## Safety Instructions



### WARNING RISK OF FLYING PARTICLES

- Use of damaged hand tools, sockets, extensions and accessories may result in injury
- Do not use torque screwdriver as a hammer
- Torque screwdriver not in calibration may cause damage to parts or tools
- Do not use extensions on handle as damage to torque screwdriver will result
- To avoid a “side load” occurred with inaccurate torque readings, please keep torque screwdriver vertical to the flat of use.



### ALWAYS USE EYE PROTECTION WHILE USING HAND TOOLS



### WARNING



### INJURY MAY RESULT FROM ELECTRICAL SHOCK

- Handle is not insulated, do not use on live electrical or high voltage circuit

## Standard

We calibrate each torque screwdriver at the factory using torque standards according to DIN ISO 6789 and ASME B107.14M-2004 for Adjustable (ASME B107.300-2010 for Pre-Set) and certify it meets the accuracy requirements of specifications DIN ISO 6789 and ASME B107.14M-2004 for Adjustable (ASME B107.300-2010 for Pre-Set)

Convert From	To	Multiply By
ozf.in	lbf.in	0.0625
lbf.in	ozf.in	16
lbf.in	kgf.cm	1.1519
lbf.in	lbf.ft	0.083333
lbf.in	kgf.m	0.011519
lbf.in	N.m	0.1130
lbf.in	dN.m	1.130
lbf.ft	N.m	1.356
lbf.ft	kgf.m	0.1382
lbf.ft	lbf.in	12
N.m	dN.m	10
N.m	kgf.cm	10.20
N.m	kgf.m	0.10197
N.m	lbf.in	8.8507
N.m	lbf.ft	0.73756
dN.m	lbf.in	0.885
dN.m	N.m	0.100
kgf.cm	lbf.in	0.8681
kgf.cm	N.m	0.09807
kgf.m	lbf.ft	7.233
kgf.m	N.m	9.807



## Premium Manual Torque Screwdrivers Pre-Set and Adjustable

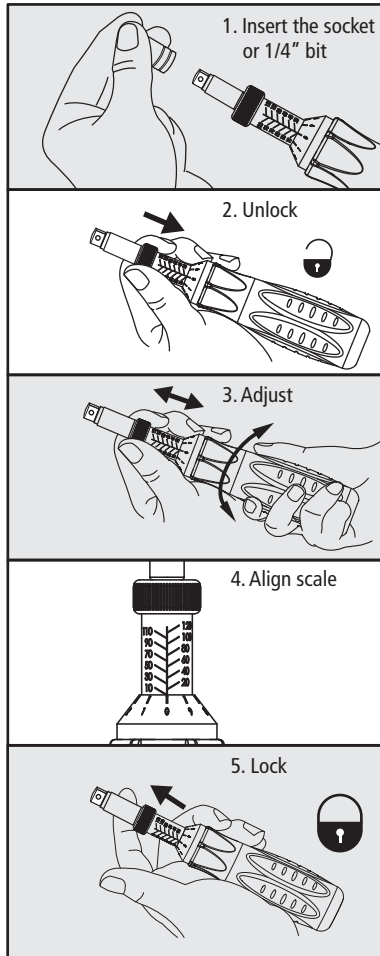


Please Read Instructions  
Before Operating

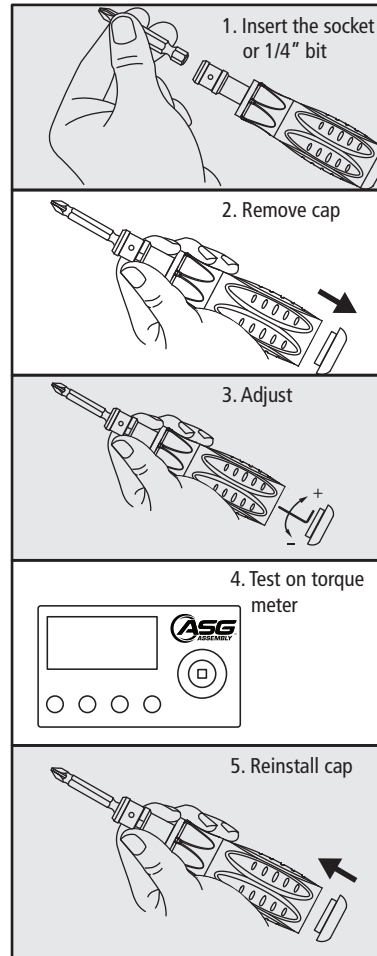
### ASG, Division of Jergens, Inc.

15700 S. Waterloo Road  
Cleveland, OH 44110-3898  
Phone: (888) 486-6163 | Fax: (216) 481-4519  
Email: [asginfo@asg-jergens.com](mailto:asginfo@asg-jergens.com)  
Web: [www.asg-jergens.com](http://www.asg-jergens.com)

## Operation: Adjustable



## Operation: Pre-Set



## Care and Maintenance

1. The torque screwdriver is a precision instrument and should be stored with care. Don't throw it around or use a hammer with it.
2. The torque screwdriver is lubricated for life and should not be oiled. The only exception is the ratchet head which may be lubricated as needed for smooth operation.
3. The torque screwdriver is a precision measuring instrument. Calibration must be done regularly to ensure accuracy and it's the owners responsibility. Suggested calibration period is at least every 12 months or even shorter depending on the situation.
4. Always store the torque screwdriver in the box after use to stay away from dirt and humidity.
5. Never disassemble the torque screwdriver by yourself. For any need to disassemble the torque screwdriver or repair it, please look for assistance from a qualified service station. Any incorrect action to disassemble the torque screwdriver may result in damage of this instrument.

**Driver performs at +/- 6% of full scale**